

Oxford to Cambridge Partnership

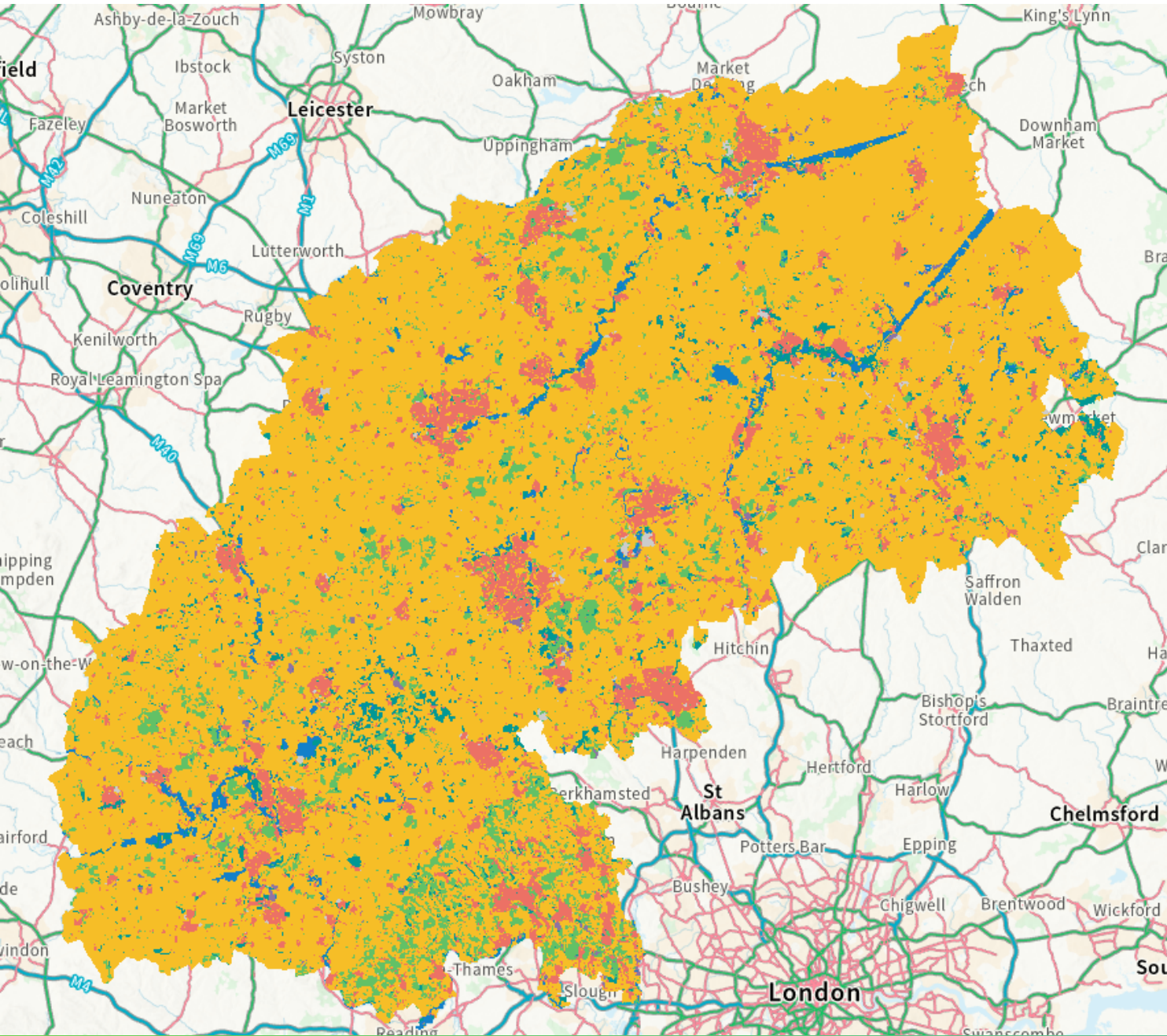


Oxfordshire County Council update








Core mission statement

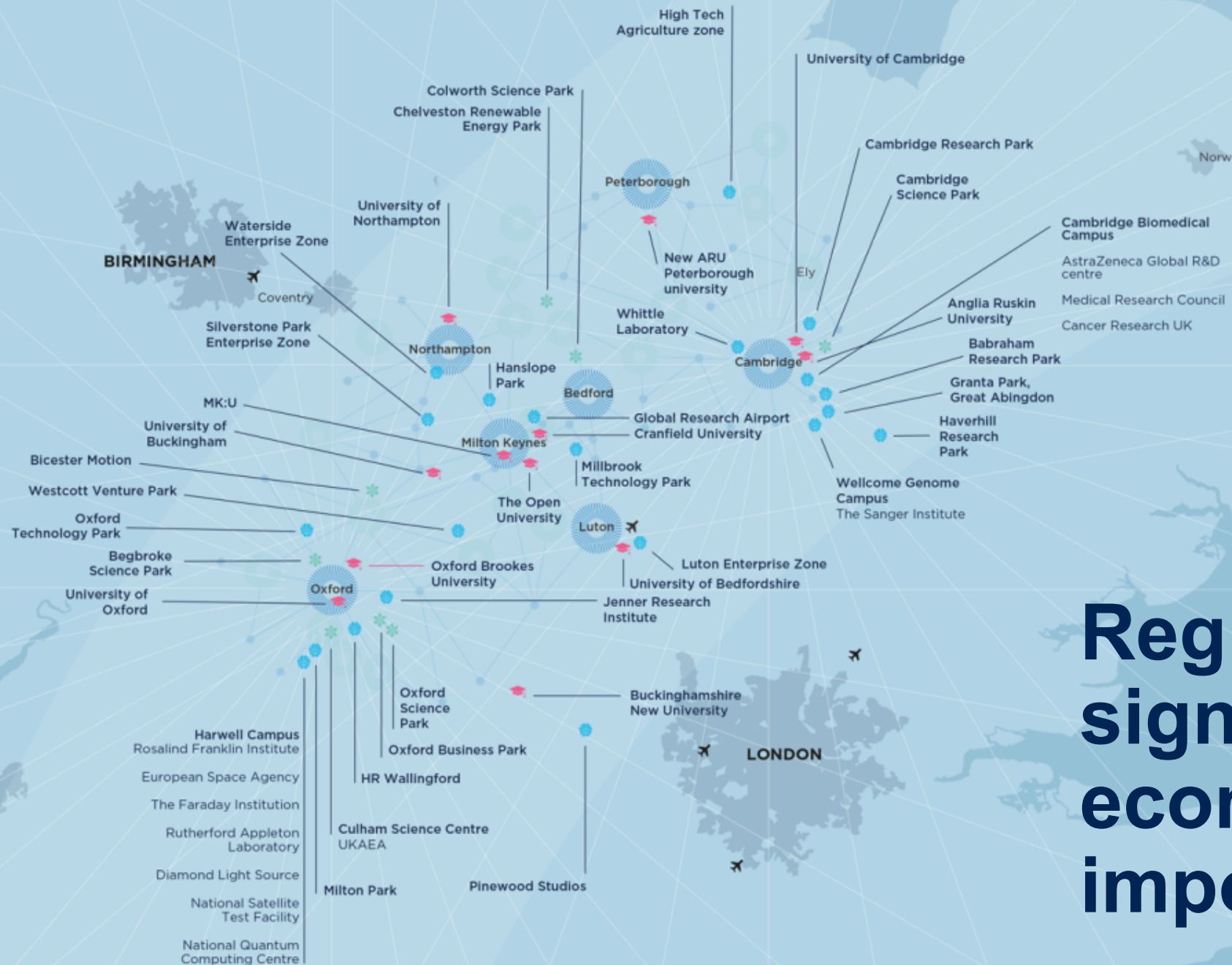
To secure a future in which our communities prosper from the best in environmentally sustainable ways of living and working.

We collaborate to accelerate economic opportunities created through the region's innovation strengths, to achieve significant environmental enhancements and to unlock investment for inclusive, high-quality sustainable development.



Environment Agency: Local natural capital

-  **Farmland**
-  **Urban**
-  **Scrub, heath & bare rock**
-  **Semi natural grassland**
-  **Woodlands**
-  **Water and Wetlands**
-  **Mixed / other / uncertain**



Region of significant economic importance

What our partnership will do

Additionality – collaboration & alignment cross boundary, cross-sector where partners choose.

Voice – awareness, advocacy, profile for the whole area

Evidence – bids, investment, routes for action

Progress – influencing pace and direction of change on shared priorities

What it won't do...

Impact on/ get involved in **devolution discussions.**

Duplicate what partners do.
Spatial planning

Programme of activity – ‘products’

Innovation & Economy

- International investment opportunities to create an evidence-led portfolio of investable projects (Atlas) and prospectus to profile on global stage.
- Data Observatory to support local decision- making – by enhancing analysis, synthesis and translation of data and knowledge exchange.
- Bringing together innovation networks and clusters to create an innovation network of networks.

Environment & Sustainability

- Continued evolution of the Environmental Principles
- Supporting nature recovery support agenda with regional and governmental coordination
- Collaborative approaches that capture or define best practice
- Tackling regional water and energy challenges
- Application of environment infrastructure mapping and monitoring tools

Communications & engagement

- Partnership communications approach: clarity & transparency, confidence, shared identity, involvement
- Organisational development: mission and purpose, objectives and desired outcomes.
- Annual Partnership conference